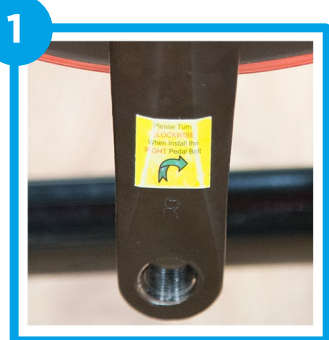


## CROSS THREADING

### LABELS



Both cranks will be  
labelled 'R' and 'L' with  
a direction



Both pedals will be  
labelled with a 'R' and  
'L'

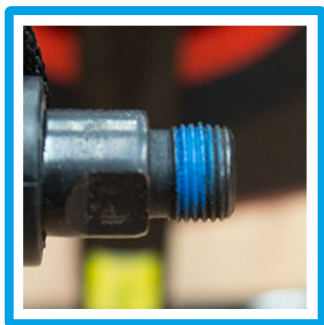
### ALIGNMENT



Make sure the pedals  
are aligned straight  
to the crank

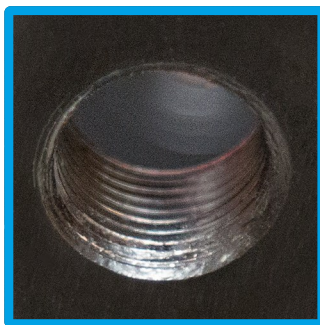
## EXAMPLES

### GOOD



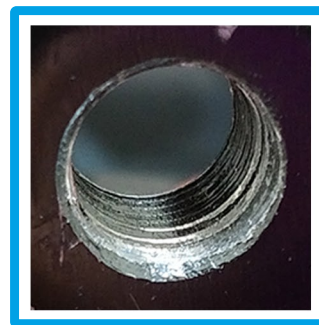
You may see blue paint on a new pedal thread

### GOOD



No silver marks or scratches and the bumps of the thread clearly seen

### BAD



Silver scratches and a smooth thread

## ADVICE

To **attach** the pedals the **right** side should be turned **clockwise** and the **left** side **anticlockwise**!

To **take off** the pedals the **right** side should be turned **anticlockwise** and the **left** side **clockwise**!

The pedals and crank can cross thread if:

- The pedal thread and crank are not aligned correctly
- The wrong pedal is attached to the incorrect side
- The pedals have been screwed in the incorrect way

For further instructions see the 'How to Remove the Crank' document found in the support center via the JLL website.